



No 1087, Pannipitiya Road, Battaramulla
Tel: (+94) 112 888 777 | www.homelandsskyline.lk

Architectural Impressions and illustrations shown may not be an exact match the of final product and these are shown for illustration purposes only.

CRESSIDA

RESORT APARTMENTS

THE NEXT GENERATION RESORT LIVING

THE NEXT GENERATION RESORT LIVING

With World Class Resort Activities

Cressida Resort Apartments is the new equation for Extraordinary Living Experience! And we're not just saying that. Living in Cressida is a way of life. A community with higher ideals and aspirations calls it home. The spaciousness of our apartments complement all of the modern conveniences and features. They guarantee a home that is comfortable, joyful, and peaceful.

With 392 spacious apartments and more than 50 world-class activities, Cressida Resort Apartments offers you a spectacular resort lifestyle.

"Tranquility at its best" is more than just a slogan at Cressida Resort Apartments. Here, we turn it into a reality! The Cressida Resort Apartments are fully equipped with contemporary amenities, and services for an unforgettable stay and an amazing stay that is worth much more than the price.



ATTENTION TO DETAIL
INSIDE AND OUT!



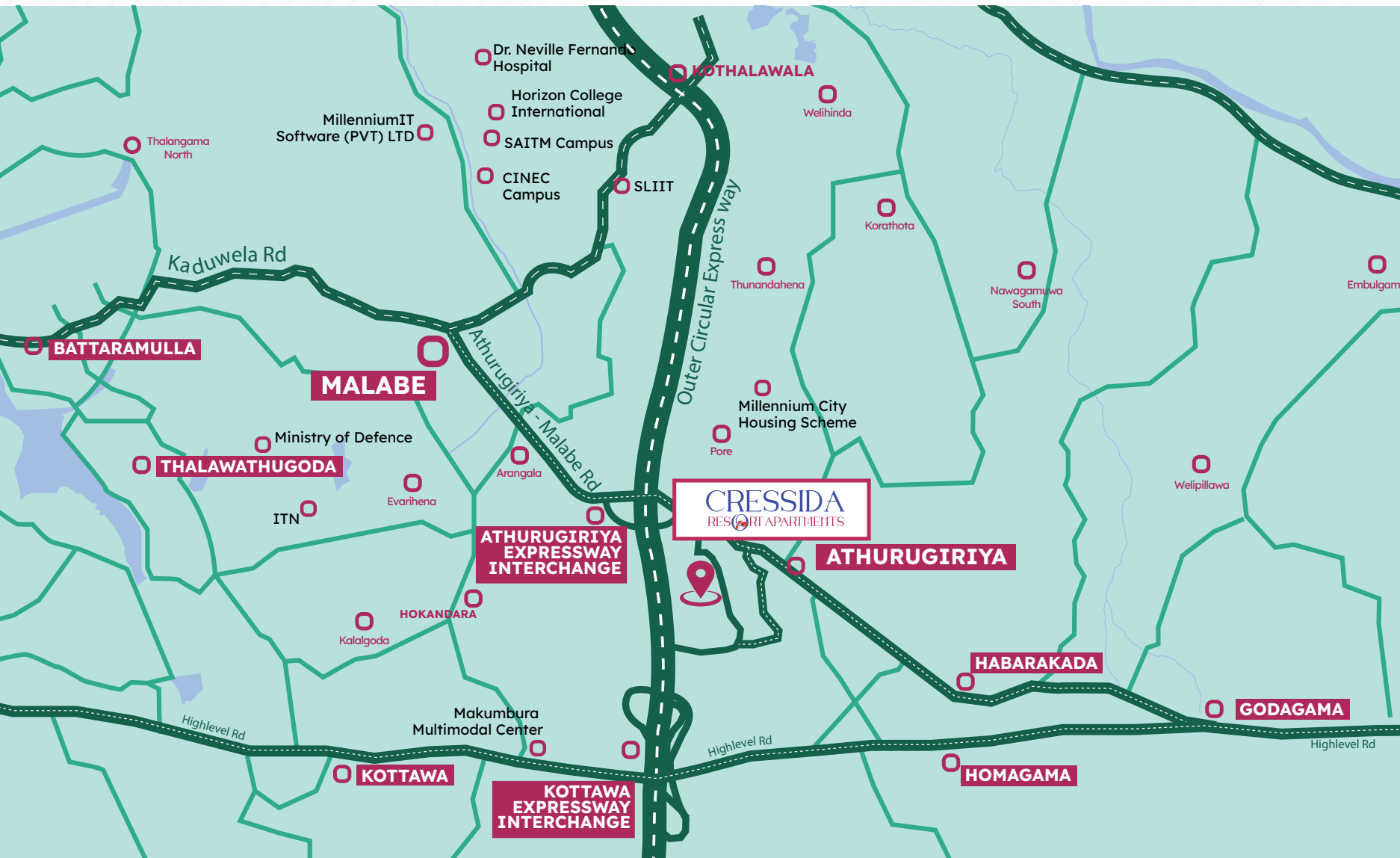
Cressida redefines the concept of community-based living spaces! Cressida apartments are the combination of modern facilities, best amenities and spaciousness. Cressida Resort apartments are an experience where you will feel the happiness of life complemented with exceptional Resort facilities.



EXPERIENCE THE
COMFORT OF CONVENIENCE!



EXCLUSIVITY, CAPACITY
AND TRANQUILITY.
ALL IN ONE



IN BETWEEN MALABE AND ATHURUGIRIYA

900m TO HIGHWAY INTERCHANGE



Convenience is key when it comes to living a better life. It enables you to get the best out of life and make it happen. So, with easy access to the expressway and just 10 minutes to Colombo, Cressida ensures your absolute peace of mind in every way.



- Multi Purpose Court
- Cricket Net
- Car Washing Bay
- Electrical Car Charging Point

- Generator Room
- Transformer Room
- Security Room
- Garbage Room
- Laundry Collection Point
- Driver's Rest Area

- BBQ Pavilion
- Party Lawn
- Sauna Room
- Steam Room
- Swimming Pool
- Kids Pool
- Gym
- Community Hall
- Management Office
- Pool Parlor

- ATM Facility
- Bill Paying Facility
- Coffee Shop
- Mini Market
- Medical Center
- Physiotherapy Area
- Pharmacy



Happiness is a fundamental goal of human existence; when it is associated with serenity and life, that is where life starts to happen. So, welcome to a life with life itself here at Cressida



WE ARE COMMITTED TO ENSURING THE QUALITY OF LIFE.

At Cressida, we know the quality of life is not just a concept that affiliates with one's well-being. It is a way of life. We know the importance of it. That is why we offer an unmatched range of amenities for you to live better ensuring your quality of life.

RESORT LIVING FACILITIES

- 1.Swimming Pool
- 2.Kids Pool
- 3.Indoor Gym
- 4.Outdoor Gym
- 5.Tennis Court
- 6.Cricket Nets
- 7.Jogging Track
- 8.Cycling Track
- 9.Library
- 10.ATM Facility
- 11.Bill Paying Facility
- 12.Salon
- 13.Laundry
- 14.Kids Play Area
- 15.BBQ Pavilion
- 16.Party Lawn
- 17.Sauna
- 18.Steam Room
- 19.Pharmacy
- 20.Backup Generator Facility
- 21.Club House
- 22.Golf Cart Service
- 23.Pool Parlor
- 24.Car Washing Bay
- 25.Electrical Car Charging Points
- 26.Landscaped Greenery Areas
- 27.24Hr Security
- 28.Visitors Parking
- 29.Spa
- 30.Garbage Collecting Point
- 31.Driver's Rest Room
- 32.Management Office
- 33.Coffee Shop
- 34.CCTV For Common Areas
- 35.Disable Access
- 36.Baby Sitting Service
- 37.Mini Market
- 38.Lift Facility
- 39.Medical Center
- 40.Basket Ball court
- 41.House Keeping
- 42.Butler Service
- 43.On Call Ambulance Service
- 44.Exclusive Reception Area
- 45.24x7 Doctors Service
- 46.Tuition Class Facility
- 47.Changing Rooms
- 48.Shuttle Service
- 49.Maids Facility
- 50.Janitorial Area



EXPERIENCE RESORT LIFE STYLE





YOU DESERVE MUCH MORE. THAT IS WHY WE OFFER YOU SO MUCH MORE.



Make your stay extraordinary by availing the advantage of a wide choice of luxurious resort amenities. With the highest standards of quality facilities Cressida Resort apartments provide, you will lead an active social life while maintaining a feel-good, healthy lifestyle. Because you deserve so much more, Cressida Resort apartments constantly offer top-notch amenities so that you can live in complete serenity, a positive vibe and energy. Every minute of life will be cherished.



A LIVING SPACE, FILLED WITH THE BEAUTY OF LIFE.

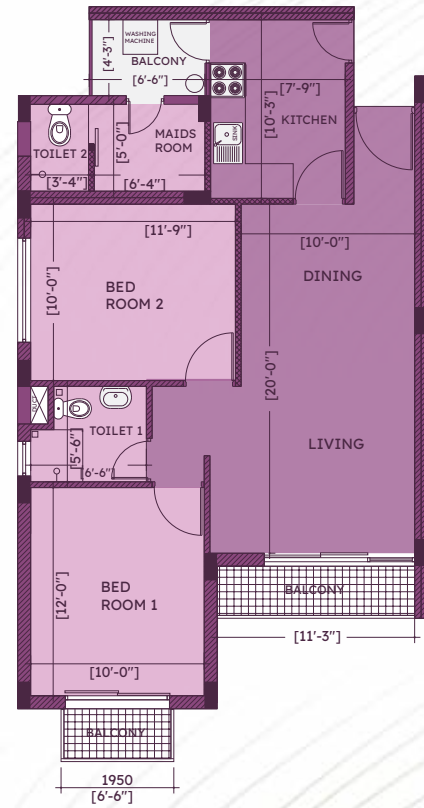
We believe that a living space is much more than just a place where you eat, sleep and spend time. We also believe that the beauty of life is reflected in the spaces we create. That is why we always, make sure that Cressida living spaces are comfortable, joyful and peaceful.



RESORT APARTMENTS LAYOUTS

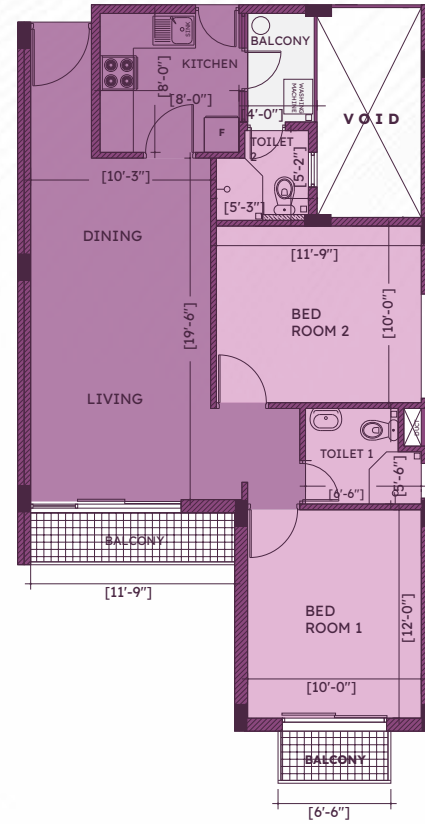
RESORT APARTMENTS SPECIFICATION

2 BR Unit 01



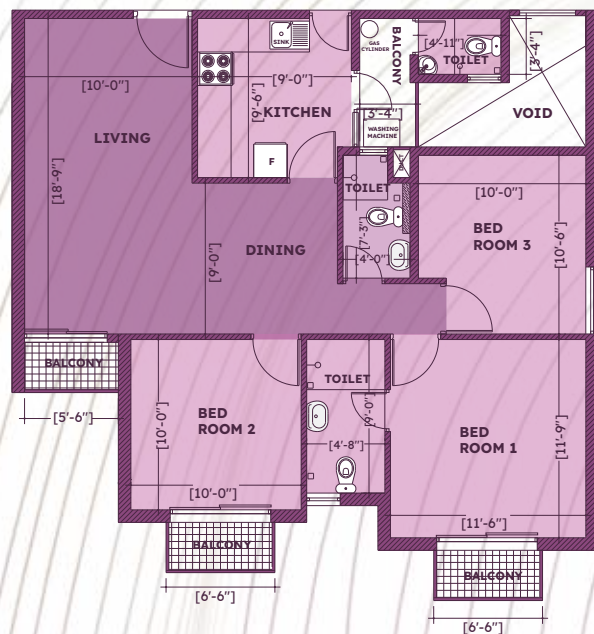
**FLOOR AREA
815 SQ FT**
2 Bedrooms | 2 Bathrooms
| Living+Dining | Kitchen |
| Maids Room

2 BR Unit 02



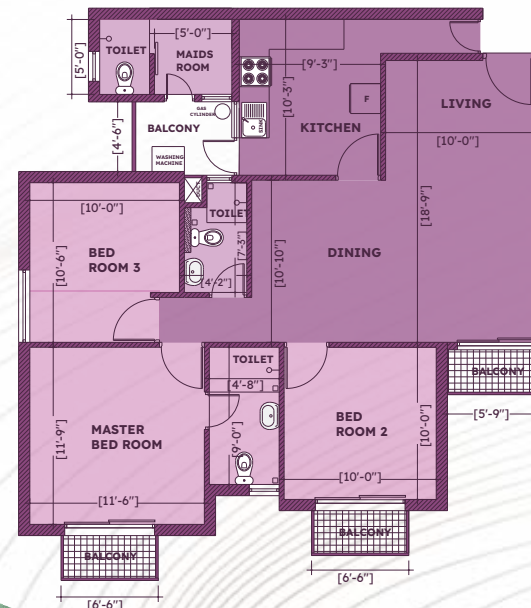
**FLOOR AREA
780 SQ FT**
2 Bedrooms | 2 Bathrooms
| Living+Dining | Kitchen
| Maids Facility

3 BR Unit 01



**FLOOR AREA
980 SQ FT**
3 Bedrooms | 3 Bathrooms
| Living+Dining | Kitchen
| Maids Facility

3 BR Unit 02



**FLOOR AREA
1060 SQ FT**
3 Bedrooms | 3 Bathrooms
| Living+Dining | Kitchen |
| Maids Room

Floor Area

Living, Dining, Pantry, 02 -03 Bed Rooms, Bathrooms, Verandah/ Balcony, 01 parking slot within the complex.

Sub Structure

Raft Individual Footing Foundation with RCC columns, plinth beam, random rubble masonry work as suggested by the Structural Engineer .

Super Structure

RCC Columns, Beams, Slabs, Internal and perimeter walls to be solid/hollow blocks.

Finishes

Floor

Living, Dining, Bedrooms and all other internal areas to be laid with glazed porcelain floor tiles. Veranda and balconies to be laid with non-slippery rustic ceramic tiles. Toilets floor to be laid with non-slippery ceramic tiles on water tight (proofed) surface, toilet walls to be laid with ceramic tile up to a height of on shower areas and 5ft on other areas of the toilet. Wall above the specified height to be plastered smooth and applied with weather shield paint. All bathroom tiles shall be of superior quality available in Sri Lanka. Colour to be selected by the Architect.

Walls

Internal walls on other areas to be plastered smooth, apply two coats of wall putty, one coat of filler and 2 coats of emulsion paint (Brand approved by Developer/Engineer), colour to be selected by the Architect. All external walls to be plastered rough or semi - rough and applied to the five-coat system. Brand and colour to be selected by the Architect.

Pantry

Pantry unit to be supplied and fixed as directed by the Architect, consisting of Granite/Quartz top on with a Stainless-steel single bowl single drain kitchen sink and chrome plated swan neck tap.

Water Supply & Waste Water

PVC cold pipe network to be placed for each bathroom via a common PVC water tank placed on rooftop. Underground water sump to be filled with National Water Supply and Drainage Board main and pump to overhead tanks. Separate water meter shall be fixed for each unit. All waste & sewer lines to be connected to the nearest manhole.

Electrical work

Power Supply with separate Electricity meter 13Amp socket outlets as directed by the Architect in the unit, 01 TV and Telephone outlet, 13A socket outlet to be provided for Master bathroom. One Electrical provision for AC shall be provided to Master Bedroom. Electrical provision for an instant type geyser shall be provided to all bathrooms except maid's toilet.

Electrical Fittings

Common area lighting shall be supplied and fixed. One air conditioner unit to be supplied and fixed to the master bedroom. Fan shall be provided for Living / Dining and other bedrooms except master bedroom. No light fittings shall be supplied by the Developer. Only point wiring shall be done by the Developer for light points within the units.

Plumbing Work and Sanitary Fittings

Fully fitted bathroom with a water closet, semi-pedestal wash basin, soap tray, tooth brush holder, hand bidet, toilet paper holder, and pencil edged mirror to be supplied and fixed for all bathrooms except maid's toilet. (Brand to be approved by Developer/Engineer). Tempered Glass Shower partition to be fixed for all bathrooms except maid's toilet

Doors and Windows -

Front door and rear door to be out of Class I, Engineered Timber sash and class I timber frame, internal doors to be out of plywood and class I timber frame. All French and other windows are out of powder coated aluminium.

Homelands Skyline is a premier licensed real estate company in Sri Lanka with its own unique. As one of the flagship entities of Homeland holdings, we have remained rooted to bridge the gap between aspiration and achievement based on the unshakable foundation of uncompromising quality, complete customer satisfaction and unparalleled living experience.



Green Elegance Thalawathugoda
No of units - 54
Completed



The Highness Rajagiriya
No of units - 37
Completed



Luxe Highway Residences Kottawa
No of units - 124
Completed



Sparkles Skyline Residences - Malabe
No of units - 83
Completed



Elixia 3C'S Skyline Apartments - Malabe
No of units - 336
Completed



Canterbury Golf Apartments - Piliyandala
No of units - 262
Completed



Flora Residences Battaramulla
No of units - 18
Completed



Green Valley Athurugiriya Panagoda
No of units - 352
Completed



Treasure Trove Residences Borella
No of units - 77
Completed



Canterbury Gardens Apartments - Piliyandala
No of units - 248
Completed



Canterbury Golf Residences - Piliyandala
No of units - 264
Completed



Santorini Apartments - Negombo
No of units - 240
Completion on 2023



Porshia Skyline Residences Nawala
No of units - 63
Completed



Aurum Skyline Residences Jawatta
No of units - 45
Completed



Ariyana Resort Apartments - Athurugiriya
No of units - 344
Completed



Santorini Residences - Negombo
No of units - 154
Completion on 2023



Canterbury Villas - Piliyandala
No of units - 173
Completion on 2024



Canterbury Lexus Apartments - Piliyandala
No of units - 264
Completion on 2024

Total Number of Units 3100+

THE MOST ACHIEVING REAL ESTATE COMPANY IN SRI LANKA

Home Lands Group is currently Sri Lanka's largest residential real estate solutions provider, owning 45% of the market share, and was named the **Most Preferred Brand** in the Residential Real Estate Sector, according to the recent brand health study conducted by Research Intelligence Unit (RIU). The Group introduced the novel concept; resort living to the country.

Home Lands Group has rapidly grown to have 09 companies under its umbrella and has evolved to become a 360-degree integrated solutions provider in the real estate sector of Sri Lanka.

Home Lands was awarded the **CS1 grading for construction by the Construction Industry** Development Authority (CIDA), for maintaining the highest standards in construction. The Group's flagship, Home Lands Skyline, bagged The Best Developer in Sri Lanka award at the PropertyGuru Asia Property Awards 2021 and then became **the first and only real estate company in Sri Lanka to be rated Fitch A (Ika) Stable** and thus the **highest rated real estate company in the island.**

Construction By -



Project By -

